

**Masonry Drill**



**ISO  
ANSI**

**Description**

**Shank:** Cylindrical Shank, Reduced.

**Precision:** Squared tip for a better centering.

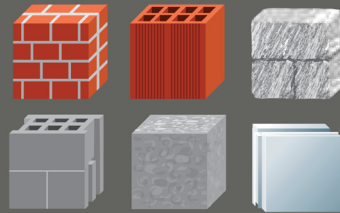
**Long lasting:** High grade carbide for a longer lasting drill bit.

**Finishing:** New anti-rust finishing.

**Speed:** Deeper grooves that improve the evacuation of dust and making more efficient the hammer drill.

**Norms:** ANSI - NF ISO 5468 - DIN 8039

**APPLICATION**



Concrete	★★★★
Stone	★★★
Quarry	★★
Granite	★
Masonry	★★★★
Bricks	★★★★

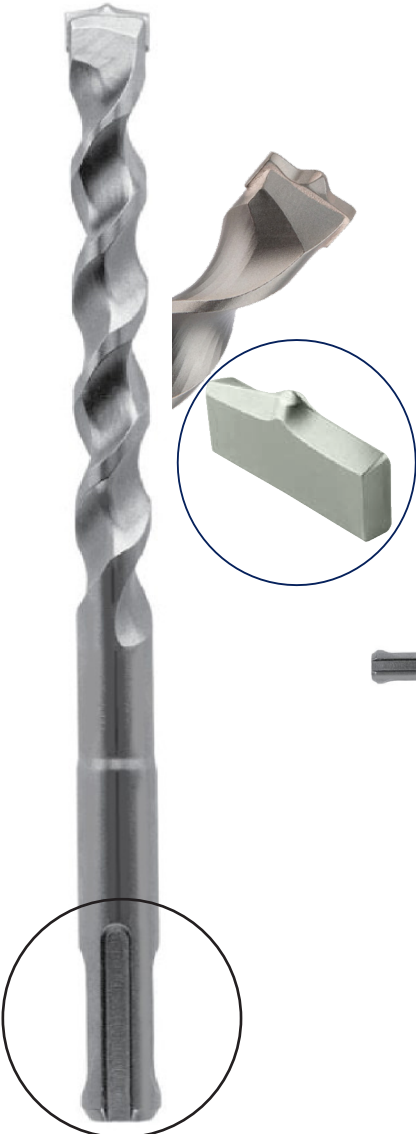


Part No.	Type	Description	Box
DS183	STD	X'tra masonry drill bit zinc plated 1/8" x 3"	10
DS5166	STD	X'tra masonry drill bit zinc plated 5/16" x 6"	10
DS384	STD	X'tra masonry drill bit zinc plated 3/8" x 4"	10
DS386	STD	X'tra masonry drill bit zinc plated 3/8" x 6"	10
DS3812	STD	X'tra masonry drill bit zinc plated 3/8" x 12"	10
DS126	STD	X'tra masonry drill bit zinc plated 1/2" x 6"	10
DS1212	STD	X'tra masonry drill bit zinc plated 1/2" x 12"	10

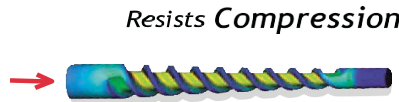
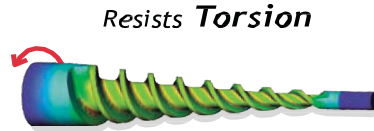
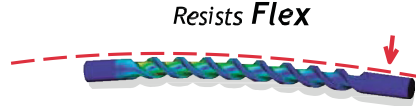
**SDS plus premium**

The **D<sup>MAXX</sup>** Advantage

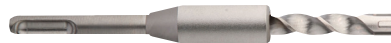
- SDS+
- 2 Cutting edges
- 4 Lateral supports
- Tungsten Carbide
- Self-centering point
- Chiseling effect



**SDS+**



**Quatro<sup>MAXX</sup> STOP**



**Adapt<sup>MAXX</sup>**



**Research and Development**

► **More Material**

Flex exerted in the lower section of a drill bit is the most likely destructive factor. The progressive core of the spiral adds material and increases the rigidity in this area which is subjected to extreme pressure

► **Anti-Blocking System**

2 asymmetric cutting edges reduce the risk of blockage when in use on a particularly hard aggregate, or on rebar. The progressive core and the roundness of the flute allow optimal removal of dust and eliminates any risk of blocking due to dust accumulation

► **Heat Treatment**

The hardness of concrete combined with the power of the drill unite to create compression. The heat treatment of the body allows the energy of the drill to be concentrated on the tungsten carbide tip (while absorbing shock waves).

Part No.	Description	Qty.
DX144	SDS plus premium 2 cutting edges 1/4" x 4"	Each
DX146	SDS plus premium 2 cutting edges 1/4" x 6"	Each
DX148	SDS plus premium 2 cutting edges 1/4" x 8"	Each
DX386	SDS plus premium 2 cutting edges 3/8" x 6"	Each
DX388	SDS plus premium 2 cutting edges 3/8" x 8"	Each
DX3812	SDS plus premium 2 cutting edges 3/8" x 12"	Each
DX128	SDS plus premium 2 cutting edges 1/2" x 8"	Each
DX1212	SDS plus premium 2 cutting edges 1/2" x 12"	Each
DX586	SDS plus premium 2 cutting edges 5/8" x 6"	Each
DX588	SDS plus premium 2 cutting edges 5/8" x 8"	Each
DX5812	SDS plus premium 2 cutting edges 5/8" x 12"	Each

Part No.	Description	Qty.
QX381116	3/8" X 1-1/16" QMAX	Each
QX121316	1/2" X 13/16" QMAX	Each
QX1211116	1/2" X 1-11/16" QMAX	Each
QX581316	5/8" X 1-3/16" QMAX	Each
QX582116	5/8" X 2-1/16" QMAX	Each

Part No.	Description	Qty.
AXSP2SDS	Spline to SDS Adapters	Each
AXSDS2SDSP	SDSMAX to SDS PLUS Adapter	Each