

**Rod Hangers**

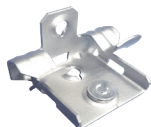

Part No.	Description	Box
THI4	Rod hanger for <b>1/4"</b> threaded rod, with thread impression	100
THI6	Rod hanger for <b>3/8"</b> threaded rod, with thread impression	100

**Flange Mounted Conduit Clips**


Part No.	Description	Box
HFC24CC6	3/8" MC/AC cable to 1/8" to 1/4" flange	100
HFC58CC6	3/8" MC/AC cable to 5/16" to 1/2" flange	100
HFC912CC6	3/8" MC/AC cable to 9/16" to 3/4" flange	100
HFC24CC812	1/2" or 3/4" hammer-on pipe clip for flanges 1/8"-1/4"	100
HFC58CC812	1/2" or 3/4" hammer-on pipe clip for flanges 5/16"-1/2"	100
HFC912CC812	1/2" or 3/4" hammer-on pipe clip for flanges 9/16"-3/4"	100
HFC24CC16	1" hammer-on Pipe clip for flange 1/8"-1/4"	100
HFC58CC16	1" hammer-on Pipe clip for flange 5/16"-1/2"	100
HFC912CC16	1" hammer-on Pipe clip for flange 9/16"-3/4"	100
HFC24CC20	1-1/4" hammer-on Pipe clip for flange 1/8"-1/4"	100
HFC58CC20	1-1/4" hammer-on Pipe clip for flange 5/16"-1/2"	100
HFC912CC20	1-1/4" hammer-on Pipe clip for flange 9/16"-3/4"	50
HFC24CC24	1-1/2" hammer-on Pipe clip for flange 1/8"-1/4"	50
HFC58CC24	1-1/2" hammer-on Pipe clip for flange 5/16"-1/2"	50
HFC912CC24	1-1/2" hammer-on Pipe clip for flange 9/16"-3/4"	50
HFC24CC32	2" hammer-on Pipe clip for flange 1/8"-1/4"	50
HFC58CC32	2" hammer-on Pipe clip for flange 5/16"-1/2"	50
HFC912CC32	2" hammer-on Pipe clip for flange 9/16"-3/4"	50



Part No.	Description	Box
HFC24	Hammer-on flange clip, FT 1/8" to 1/4", bottom mount	100
HFC58	Hammer -on flange clip, FT 5/16" to 1/2", bottom mount	100
HFC96	Hammer -on flange clip, FT 9/16" to 3/8", bottom mount	100



Part No.	Description	Box
HFC24S	Hammer-on flange clip with 1/4"x3/8" stud for 1/8"-1/4" flanges	100
HFC58S	Hammer-on flange clip with 1/4"x3/8" stud for 5/16"-1/2" flanges	100
HFC96S	Hammer-on flange clip with 1/4"x3/8" stud for 9/16"-3/8" flanges	100

▲ Available on Request

## ▲ Conduit Clip



Conduit clip, 1/2" to 3/4" Max load Vertical 100lbs. Horizontal 25lbs.

Part No.	Description	Box	Case
CC50	1/2" Conduit clamp	100	1000
CC75	3/4" Conduit clamp	100	1000
CC100	1" Conduit clamp	100	1000
CC125	1-1/4" Conduit clamp	100	1000
CC150	1-1/2" Conduit clamp	100	1000
CC200	2" Conduit clamp	100	1000

## ▲ Conduit Clip w/ Pin



For use with powder actuated tools  
Clip sizes from 1/2" to 1"

Part No.	Shank Lgth	Description	Box	Case
CC50-P25	1"	Conduit clip (1/2") w/ .300" head, .145" shank dia. pin	100	1000
CC50-P32	1-1/4"		100	1000
CC75-P25	1"	Conduit clip (3/4") w/ .300" head, .145" shank dia. pin	50	500
CC75-P32	1-1/4"		50	500
CC100-P25	1"	Conduit clip (1") w/ .300" head, .145" shank dia. pin	50	500
CC100-P32	1-1/4"		50	500
CC25-P25	1"	Conduit clip (1/4") w/ .300" head, .145" shank dia. pin	100	1000
CC38-P25	1"	Conduit clip (3/8") w/ .300" head, .145" shank dia. pin	100	1000
CC75-DN25	1"	Conduit clip (3/4") w/ 8mm head, 3.7mm(.145") shank dia. pin	50	500

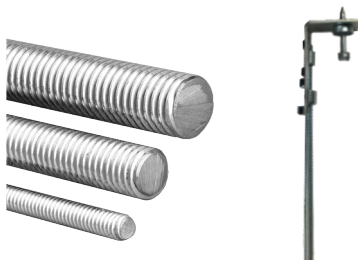
## ▲ Pencil Rod



Diameter 1/4"  
Additional diameters and lengths available

Part No.	Description	Bundle	Pallet
5-4	Pencil rod 1/4" x 4'	100	TBD
PR25-6	Pencil rod 1/4" x 6'	100	TBD
PR25-8	Pencil rod 1/4" x 8'	100	TBD
PR25-10	Pencil rod 1/4" x 10'	100	TBD
PR25-12	Pencil rod 1/4" x 12'	100	TBD

## ▲ Threaded Rod



All threaded rods, diameter 1/4", 3/8", 1/2", 5/8", 3/4", 7/8", 1" are available  
All lengths are available

Part No.	Description	Bundle	Pallet
TR25-4	Threaded rod/ All thread 1/4" x 4'	100	TBD
TR25-6	Threaded rod/ All thread 1/4" x 6'	100	TBD
TR25-8	Threaded rod/ All thread 1/4" x 8'	100	TBD
TR25-10	Threaded rod/ All thread 1/4" x 10'	100	TBD
TR25-12	Threaded rod/ All thread 1/4" x 12'	100	TBD

▲ Available on Request